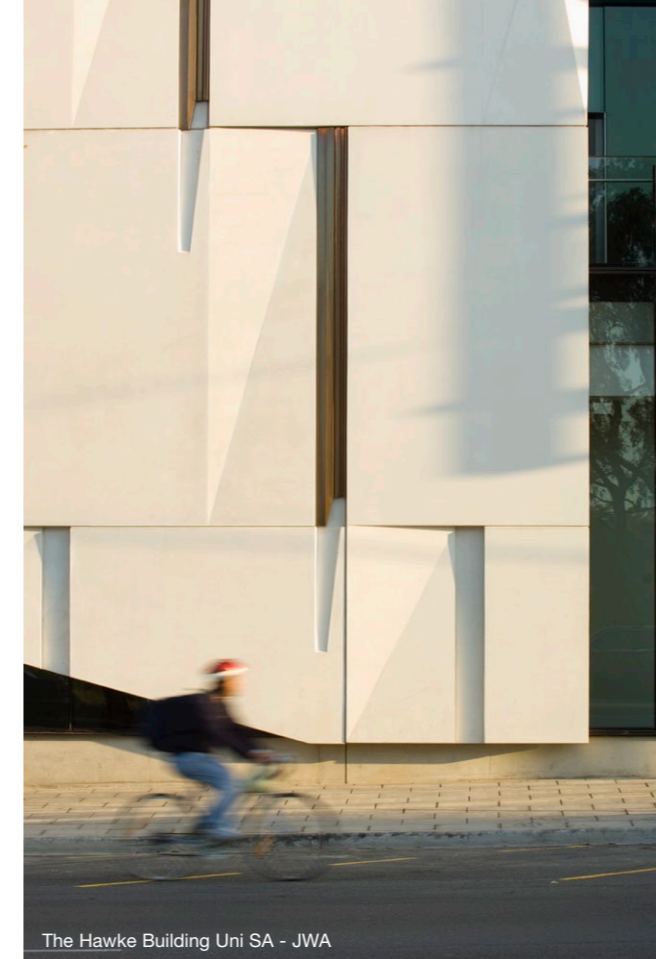




The Nigel Peck Centre for Learning and Leadership - JWA



The Hawke Building Uni SA - JWA



Macallen Building - Office dA

A CREATIVE COLLABORATION – OFFICE dA AND JOHN WARDLE ARCHITECTS

Office dA, from Boston, and John Wardle Architects, from Melbourne, have come together to form a collaborative design team to create a new building for the Faculty of Architecture, Building and Planning and the Melbourne School of Design.

Nader Tehrani and Monica Ponce de Leon, Principals of Office dA recently visited projects by JWA in Melbourne and felt a strong affinity and common ground with the practice's work. Similarly, John Wardle has followed the recent work of Office dA with great interest and respect. There is an overlapping interest in materiality, detail and tailored design solutions. The divergences in design approach are in varying emphases on the intuitive, technology, and systems thinking.

Design responsibilities will be equally shared between JWA and Office dA, whilst JWA will lead the project documentation and contract administration phases.

John Wardle Architects (JWA) offer a wealth of experience across Australia in contemporary university buildings recognised for their design excellence, including:

> **The Louis Laybourne Smith School of Architecture, awarded the AIA Sir Zelman Cowen Medal for best Public Building in Australia in 2006.**

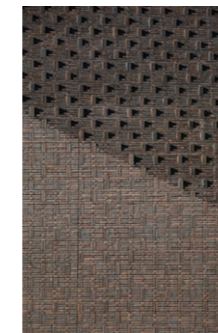
Office dA has not only been in practice for 20 years, but its principals have been academics for this same period, at RISD and Harvard Universities, and now Monica Ponce de Leon leads University of Michigan as its Dean. Nader Tehrani is tenured as an Associate Professor in Architectural Design at MIT, while leading Office dA in its various initiatives. They have undertaken recent projects for:

> **Harvard Graduate School of Design**
 > **Rhode Island School of Design**
 > **Georgia Institute of Technology College of Architecture**

BUILT PEDAGOGY

The Explanatory Building

A consistent theme across all JWA projects is the idea of 'The Explanatory Building', by which they mean the desire to celebrate and expose rather than conceal the activities housed within. But more than that, it also means to reveal a site's history, to extend into a surrounding landscape, to interact generously with the civic realm and to knit together a disparate campus. And ultimately, to gather together a suite of ideas that together create a unique expression for each project.



The folding brick wall of the bookstack pavilion at Melbourne Grammar School reveals the soldier bricks of an invented bond pattern, providing a visual architectural clue to the library contents within.

The opportunity to build a school of design offers a very critical responsibility; to understand the imperative of the building to act as a didactic instrument, and to teach by way of organization, material invention, optimization, experience, and innovative programming.

Applied Research

Office dA erase the boundaries between academia and practice by taking their practical experience into the academic context, while also using their research at school to invent new ways of engaging the building industry. The advancement of digital fabrication, off-site construction, and prefabrication has come to affordably offer a great level of formal inventiveness. These mutual platforms create a bridge between the practical and the inventive, the professional and the speculative.

A Research and Education Virtual Model

Arup, the clear industry leader in the field of advanced digital engineering and building modelling will be an integral team member. Use of total building modelling by Arup and fully modelling the structure and services will allow us to 'virtually' construct and hence assess and improve coordination.

For this project Arup propose to offer their virtual model for research and education. This means access to digital content through design and construction to be then used as a resource over the life of the building.

The Nigel Peck Centre for Learning and Leadership - JWA

This library and learning commons project by JWA is an exemplar of collaboration across the disciplines of architecture, engineering and building.

The design goes to great lengths to capture the multitude of landscape and contextual views available and so becomes an outward focused learning environment orienting its students toward the city, its history and beyond.

The Louis Laybourne Smith School of Architecture - JWA

The Louis Laybourne Smith School of Architecture at the University of South Australia designed by JWA is shared by architecture, interior design, industrial design and graphic design. Its structure and services at times are often left unadorned, exposing the workings of the building to its students' gaze and providing a robust space open to customisation. The building itself is a pedagogical tool, peeling back the layers and encouraging intervention.

The ground level blurs a public street with public display. A formal gallery space can be opened to the adjacent studios

to create a continuous display. Nearby, the Architecture Museum, a significant collection of architectural drawings and models, is made accessible by research students and the public alike.

Macallen Building - Office dA

The Macallen Building in South Boston, Massachusetts, USA, required a reassessment of residential typologies to produce an innovative and sustainable building. It occupies a site that mediates between highway off-ramps, an old residential neighborhood, and an industrial zone, and negotiates different scales and urban configurations to address its surrounding context. Office dA capitalized on all possible "green" building strategies to make it the only LEED certified multi-family building in Boston.



Louis Laybourne Smith School of Architecture - JWA



John Wardle Architects

office dA ARUP



Queensland Brain Institute - JWA



Queensland Brain Institute - JWA



Offices of Architecture and Urban Design, Harvard Graduate School of Design - Office dA

THE ACADEMIC ENVIRONMENT

The Architectural Academy

The academic life of architectural schools varies from other spaces within institutions. If other halls of academy are just that, places of learning, architectural schools have also served much broader cultural functions, establishing critical relationships between the everyday-life of the studio and the broader public at large. To this end, the lecture series, exhibitions, symposia, among other venues are central to the school's representation to the world, and outside audiences. On the other end of the spectrum, the working desk in studio has served as drafting board, model-making studio, place of social exchange and quite often, bed. For this reason, the ability to acknowledge the diversity of life, creativity, pressures and decorum of this type of school is central to the question of its reconceptualization.

'The aim is to design for the future, to produce leading scholars, and practitioners able to work together, able to critically reflect and act on social, ethical, and ecological demands, and thus able to propose more aesthetic and more appropriate urban and landscape futures.'

Professor Phillip Goad, Director, Melbourne School of Design



Accidental Research

Interstitial and connecting spaces between functions can be re-programmed to provide opportunities for 'Accidental Research' where impromptu meetings spark curiosity and promote cross-disciplinary collaboration. Multidisciplinary research takes place at the edges of traditional disciplines and across traditional subject boundaries. Experience shows that multidisciplinary research works best when people from different research backgrounds are able to work together free from discipline or structural barriers.

The Academic Workplace

The workplace environment must support the sharing of ideas and knowledge. It must encourage dialogue, communication and contemplation in order to assemble knowledge and networks in a specific field. The workplace must create an environment that is integrated into the life of the university and brings colleagues closer together.

Interaction between colleagues can be under pinned by workplace environments that recognise the varied ways in which people work, both individually and in groups, and the power of connectivity with fellow colleagues, staff and students.

Queensland Brain Institute, University of Queensland - JWA

This research facility for the University of Queensland is dedicated to understanding the brain. The new building houses a remarkably broad gathering of the scientific community including researchers, associated schools, centres, institutes and commercial bodies.

'A Theatre for Research' theme was developed to frame an architectural approach that would encourage the fertile cross pollination of ideas hoped to be an outcome of the inhabited project. To this end, the building exaggerates the visibility of research activity, placing the laboratories on display upon entry.

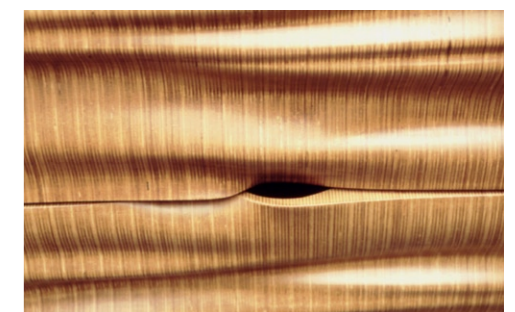
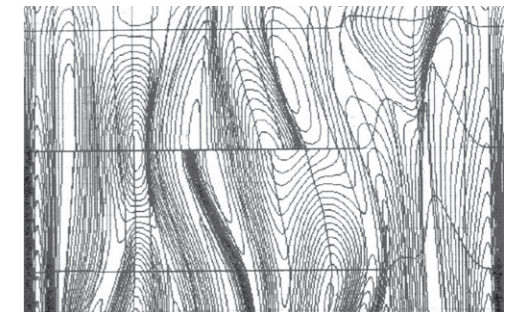
Circulation routes have been elevated from the prosaic to become lively promenades that are attached to informal conversation spaces important for conducting accidental research in a more social environment.

Offices of Architecture and Urban Design, Harvard Graduate School of Design - Office dA

This project was for the Harvard Graduate School of Design, Cambridge, Massachusetts. It redistributes and reorganizes faculty/administrative offices, separating areas of everyday use from formal spaces for exhibition and reception of guests. A symbolic front for the department also serves as a gallery for faculty work.

The architectural revisions to Gund Hall respect the vocabulary of the existing conditions. Alternatively, installations of furniture are placed strategically throughout the spaces to serve as a backdrop for the spaces they serve.

The design of the furniture was taken as an opportunity to experiment with new technologies, emerging techniques of fabrication, and economical materials.



John Wardle Architects

office dA ARUP



Design Studio at the Louis Laybourne Smith School of Architecture - JWA



Georgia Institute of Technology - Office dA



Fleet Library - Office dA

THE DESIGN STUDIO

The Studio Experience

Architecture schools have evolved a great deal over the decades, each responding to the new programmatic and pedagogical demands of their time. Of the various programs, maybe the 'studio' has come to characterize the cornerstone of architectural education, the centre of one's experience in school, day and also during the night. To this end, we have seen many struggle with the way in which the studio interacts with the students' intellectual life (library), cultural life (exhibition space), instructional life (auditorium) and social life (café).

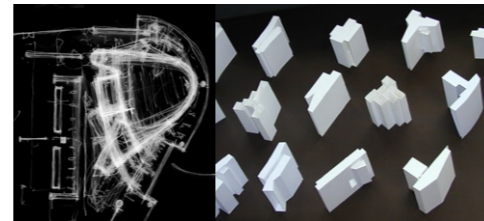
More recently, with the advent of digital workshops, 3-d printers, laser cutters, and cnc routers have become central parts of one's daily experience in the studio space; once relegated to the workshop and basements of building, they are now becoming the foundation of instructional life, as experimental building projects, mock-ups, and speculative research has become a central part of students contribution to architectural culture. Studios have also increasingly become spaces for personalization, the challenging of authority, and the place of intellectual resistance.

More than anything though, the studio is characterized by being the 'classroom' of the architectural school, its heart and soul, a place where people work, sleep, learn, play, and interact at all levels.

It is at once, a deeply personal space, as one sets one's earphones on, while also being the most public, the space of collective production. Of course, each school has come to characterize itself not by other attributes, then at least by its studio spaces, where the majority of ones years of school life are spent.



Central to studio life, is the role of the 'crit', or review space, both formal and informal. Where traditional instruction in other fields is done in lectures, seminars and labs, architecture thrives on a format that requires an interactive engagement between words and images, positions and interpretations, critiques and rebuttals, all of which define the discursive nature so central to architectural dialogue.



Cross-disciplinary Design Thinking

The Design Studio will place design thinking and and this interactive workshop approach at the centre of cross-disciplinary discussion and become an incubator for learning. Both formal and informal teaching and learning spaces will come together to create a learning landscape that promotes peer to peer learning, enhances staff and student interaction and projects a strong image of the School to the wider profession.

Understanding Academia

Both principals of Office dA are immersed in academia and understand the importance of design studio teaching, as well as the complex cultural life of university settings. Currently Nader Tehrani is a professor at the Massachusetts Institute of Technology and Monica Ponce de Leon is the Dean of the University of Michigan's Taubman College of Architecture and Urban Planning. Their first hand experience will be essential in developing innovative programming solutions that will create quiet, individual research spaces, as well as collaborative, open, and flexible environments.

The Kaurna Building - JWA

The Kaurna Building is home to the Louis Laybourne Smith School of Architecture and Design at UniSA and the South Australian School of Art. The response to the brief was to intertwine the academic streams of architecture, design and arts, and exaggerate the shared spaces. Corridors, stairwells and foyers become meeting places and are designed to allow for pinning up of work in progress. Serendipitous adjacencies between teaching and exhibition spaces, indoor/outdoor studios and the model room sliced into the plan are created.

Hinman Building College of Architecture - Office dA

The Hinman Building was originally designed for industrial research and is to be rehabilitated into facilities for the College of Architecture at the Georgia Institute of Technology, Atlanta, Georgia, USA. A significant expansion to the original building will be devoted to graduate architecture and industrial design education and related research programs. Provisions are being made for design studios, computer labs, jury and pinup areas as well as informal and formal public spaces.

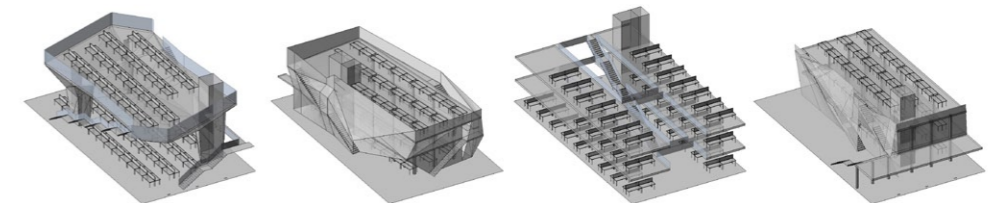
A New Learning Environment

The Faculty Library will form an integral part of the social learning environment of the new School. Peer to peer learning will be fostered by a spatial experience that draws students in and is supported

by the latest technology. There will be a range of opportunities to work in different group scenarios including both quiet and noisy, small and large, and social or focussed. Reflective, individual study spaces will also be needed at a remove from the more interactive areas.

Fleet Library - Office dA

Office dA transformed an old bank into the Rhode Island School of Design's main library on the first 3 floors in 2006, which is conceived as a collective 'living room' for the 500 students housed above. Two new pavilions were positioned within the main hall, enabling the addition of new study spaces, reading rooms, and a circulation island. The pavilions make use of every surface and pocket of space to maximize their functionality, and were prefabricated and CNC-milled off-site to allow them to be installed in the most efficient manner.



Studies for the College of Architecture at the Georgia Institute of Technology - Office dA



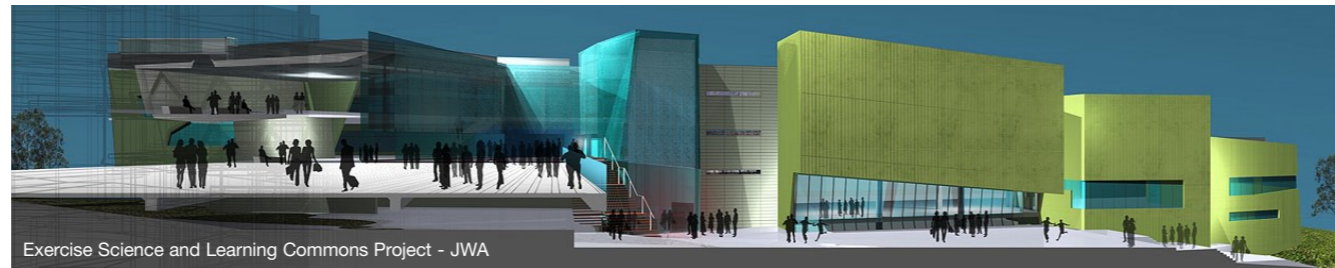
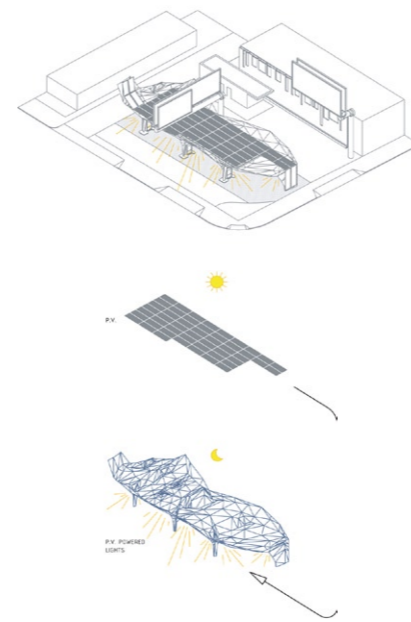
office dA ARUP



Macallen Building - Office dA



Helios House - Office dA



Exercise Science and Learning Commons Project - JWA



Jane Foss Russell Building - JWA

THE LIVING BUILDING

Sustainability and Pedagogy

Within the context of sustainability, a great deal of changes have occurred within recent years, if not in significant advancement, at least in the consciousness that has been raised due to global warming, green house gases, and the general recognition of the depletion of the worlds natural resources. Among other factors, the construction of buildings have had a huge impact on this, but it is still a rare case that the question of sustainability has had in instructive role in the pedagogy of a building itself, especially among schools of architecture.

Part of its difficulty, of course, is to arrive at a consensus of its causes, its diagnosis, and its best strategies within the broader critical debate of schools. For this reason, we have seen a productive exchange coming from many histories and positions. Some pedagogies have re-launched a more nuanced relationship with studies of building typologies and morphologies that establish meaningful possibilities towards passive cooling and warming of building—strategies that are inherited from regional materials, and methods derived from age old techniques.

Others have argued for a professionalized student body who need to enter the work force with an understanding of environmental rating systems as a way of offering an immediate and pragmatic way of instrumentalizing knowledge. In turn, at places like MIT, different research groups have been focusing on discrete technologies to produce energy, interactive technologies ‘sensing’ their environments to offer a reduced and increased load of energy, where needed, and a range of other surgical advancements that challenge the very essence of classical mechanical engineering as we know it.

What is important is that this debate is very much present, and that a new building of architecture can not only serve as a frame for it, but indeed become a physical platform for its experiments, incorporating its strategies both for top down, and also bottom up.

Office dA

Over the years Office dA has advanced professionally on two specific fronts that deserve mention: the dedication to integrated technologies and the development of green buildings. While many designers have adopted green building practices, Office dA has made sustainable design a part of their foundational ethics, binding it to their design process, and finding innovative ways in which to intertwine it into the structural, mechanical, and organization of our buildings.

John Wardle Architects

JWA’s interest in Ecological Sustainable Design (ESD) principles developed as early important design guidelines in our practice during our involvement with CSIRO’s Division of Atmospheric Research’s New Research Laboratory Building and Administrative Facilities Building – where the CSIRO’s work focuses on policies, actions and methodologies that are responsive to changes in atmospheric health, for the responsible use of the atmosphere and its interactions with the Earth.

Since then, over multiple projects, JWA continue to support the active integration of sustainable design principles as a priority at the inception of every project. Each site, building type, and client group presents different opportunities and constraints, requiring specific response for every project.

ARUP

ARUP will be a key member of our project team providing sustainability advice. ARUP will undertake a level of simulation at each stage of the design process using specialised software. The ability to use technical and analytical experience to interpret, communicate and apply the results of complex simulation results is an essential part of the Arup design process.

The design team will take advantage of opportunities for natural day lighting, passive solar design, shading, and hybrid natural/mechanical ventilation, as well as apply active energy saving technologies to ensure the New Building for the Faculty of Architecture, Building and Planning and Melbourne School of Design is a high performance, environmentally responsive building that can serve as an exemplar to the Faculty’s pedagogy itself.

Macallen Building - Office dA

By employing a ‘staggered truss system,’ unit types in this multi-residential building can be staggered on top of one another, vertically skewered with plumbing and mechanical shafts to secure maximum efficiency and flexibility. All possible ‘green’ building strategies were exploited, making it the only LEED certified multi-family building in Boston. The project is LEED Gold Certified and was a AIA/COTE Top Ten Green Project in 2008.

Helios House - Office dA

The design of Helios House embraces the paradox of creating a green gas station for BP, transforming the conventional features of a gas station, while incorporating green building features and messages into the project. The water, heat, energy, lighting, and material systems of the station were all built to maximize sustainability and energy efficiencies, including 90 solar panels covering the canopy’s roof.

Jane Foss Russell Building - JWA

The design for this new Student Services building for the University of Sydney, incorporates a chilled beam air conditioning system and has been assessed as achieving a 5-Star design rating under against the Australian Building Greenhouse Rating Scheme rating methodology, and a 5 Star Green Star design rating under the Green Star office tool.

Exercise Science and Learning Commons Project - JWA

The design for this new building for Victoria University in Melbourne is targeting 68 points or the equivalent of a 5.5 Green Star rating under the Green Star Education Pilot Tool. A number of significant initiatives are aimed at earning ‘innovation’ points:

- > a thermal labyrinth
- > mixed mode ventilation systems
- > thermal chimneys
- > chilled beams
- > geothermal loops
- > wind turbines and photo voltaic cells

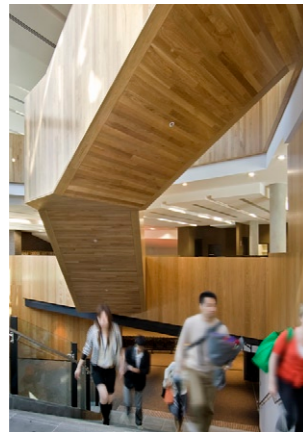


John Wardle Architects

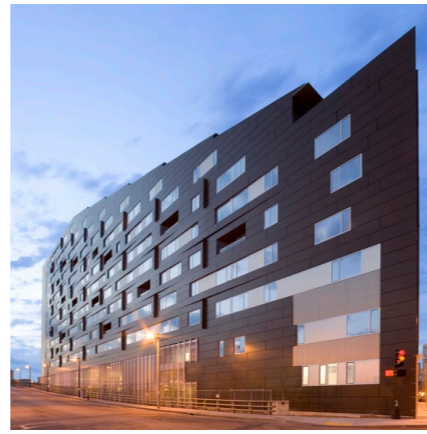
office dA ARUP



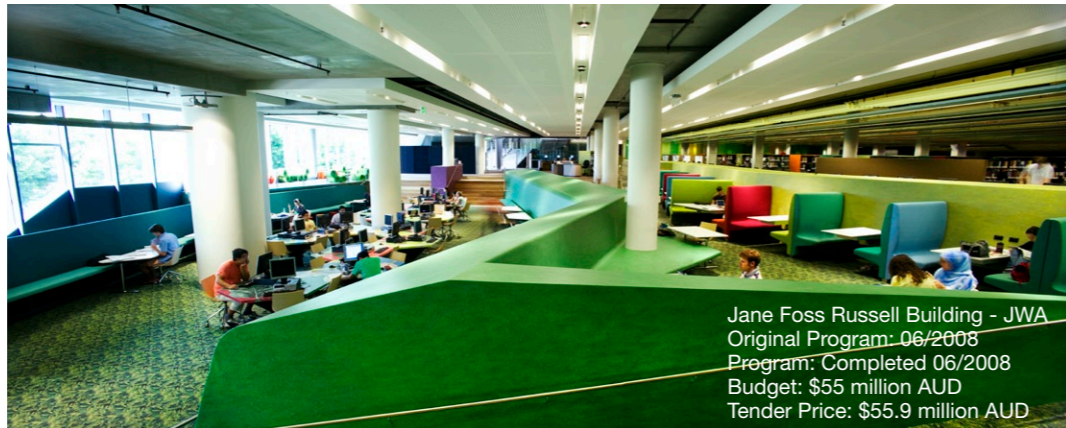
Urban Workshop - JWA (with Hassell + NH Architecture)
Original Program: End 05/2006
Program: Completed 05/2006
Budget: \$200 million AUD
Tender Price: \$200 million AUD



Melbourne Grammar School
JWA (left)
Original Program: End 11/2007
Program: Completed 05/2007
Budget: \$16 million AUD
Tender price: \$16 million AUD



Macallen Building - Office dA (right)
Program Completed; 2007
Budget: \$73 million USD



Jane Foss Russell Building - JWA
Original Program: 06/2008
Program: Completed 06/2008
Budget: \$55 million AUD
Tender Price: \$55.9 million AUD

Office dA Client Referees:
Jorge Silveti
Former Chair of Architecture Department
Harvard Graduate School of Design
ph: +0011 1 (617) 426-7070

Ellen Dunham-Jones
Director of the Architecture Program
Georgia Institute of Technology
ph: +0011 1 (404) 894-4885

JWA Client Referees:
Gini Lee
Former Head of School - Louis Laybourne-Smith
School of Architecture and Design
ph: (07) 3138 2635

Professor Perry Bartlett
Director - Queensland Brain Institute
University of Queensland
ph: (07) 3346 9560



Tongxian Art Gatehouse
Location: Tongxian, China
Construction: 2003
Constructed area: 3000 m2

Design Team
The design team will draw upon the best skills and experience of Office dA, JWA with Hamilton Wilson. The team is briefly described below:

Office dA
Nader Tehrani
Principal
Associate Professor of Architecture,
Massachusetts Institute of Technology
Nader is internationally recognised for his architectural design work as Principal of Office dA. He has a particular interest in the effective translation of academic research into practice, testing the boundaries of construction systems and technology.
In the academic context, Nader has focused on research surrounding materials, methods of aggregations, geometry and the advancement of digital fabrication.

Monica Ponce de Leon
Principal
Dean of the University of Michigan's
Taubman College of Architecture and
Urban Planning
Prior to her appointment at Michigan, Monica was Professor of Architecture, and director of the digital lab, and acting architecture program director at Harvard Graduate School of Design. During her tenure there, she also held visiting positions at the Southern California Institute of Architecture and the Georgia Institute of Technology, and has given over 60 lectures and symposia on her work, which has been published in over 200 publications worldwide.

CAPABILITY & PROCESS

Office dA, from Boston, and John Wardle Architects, from Melbourne, have come together to form a collaborative design team to create a new building for the Faculty of Architecture, Building and Planning.

Office dA
www.officeda.com
Office dA is a Boston-based design firm led by principal partners Monica Ponce de Leon and Nader Tehrani. The firm's work ranges in scale from furniture, to architecture, to urban design and infrastructure, with a focus on craft, detailing, and precision. Office dA seizes on the challenges unique to each project—the peculiarities of a site, requirements of program, and cultural specifications—as the catalysts for transformation in architecture. An investigation of the potentials of materials and construction techniques, sometimes imported from fields outside of architecture, is the foundation for every design.

Office dA's simultaneous rigor and sensitivity have allowed the firm to develop a portfolio of projects around the world— including project in the US, China, Chile, and Korea—which uniquely marry local craft and tradition to global and contemporary techniques.

John Wardle Architects
www.johnwardlearchitects.com
JWA is a design intensive architectural practice based in Melbourne that emphasises the importance of research and investigation into the specific nature of every project. Each project is tailored to suit the specific aspirations of its client, the characteristics of its site and the detailed requirements of its future occupants.

JWA has designed many significant tertiary academic facilities for clients with widely varying requirements, but there are also some common threads. A brief will vary from teaching and research laboratories to architecture studio, gallery to auditorium, library to learning commons, student services to academic offices. The common ground is the desire to provide a strong identity for the academy, and the need to address contemporary modes of teaching and learning.

Over the years, JWA has worked in association with nine other practices to design and document 12 projects ranging from \$4M to \$380M in value. The energies of JWA are invested into meeting the aspirations of the client group.

Hamilton Wilson – Educational Specialist
Hamilton Wilson, from Wilson Architects in Brisbane, an expert in contemporary learning environments, will provide specialist consultancy services in this field. Hamilton's interest in the process of interaction of students and information has led him into creating design solutions that help meet student diversity in study behaviour. Hamilton Wilson was Educational Specialist for the recently completed Advanced Concept Teaching Space at the University of Queensland (UQ ACTS). This space combines research, interactive technology and innovative teaching in one location.

Recent projects working with JWA include:
> Sci-Tech Library, Jane Foss-Russell Building, University of Sydney
> Victoria University Learning Commons
> M2 Research Building and Plazzo for University of South Australia
At the Sci-Tech Library, the interior is designed to cater for different modes of learning, from noisy-public-informal, to quiet-private-formal. The intensity of interaction is graduated across the library from the most collaborative areas near the entry, through the bookstacks that frame individual group spaces to the quietest areas for reflection.

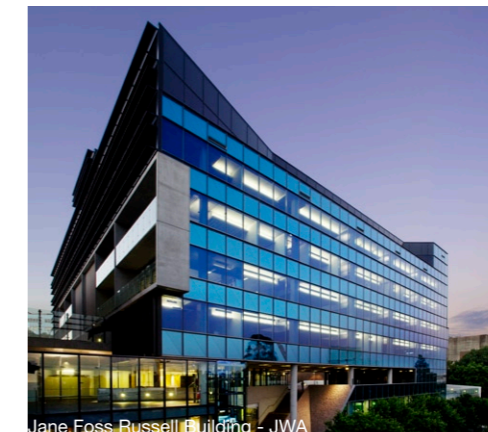
Preferred Consultants:
We have worked with ARUP in the preparation of this submission and they are our preferred consultant in the disciplines of Ecologically Sustainable Design, Structural and Services Design.

Collaboration and Engagement between Architect and Client
JWA and Office dA consider design to be a research discipline with several areas of focus, among them a careful analysis of a program as well as an exhaustive examination of appropriate building systems and technology. We always work to achieve a synthesis between all aspects of a project, from the level of constructional logic and the individual detail, to the landscape and its engagement with the city.

Integration
Over the years, Office dA has developed a methodology of integration. This notion of integration extends to their relationship with consultants, architects, and the building industry as a whole. This integrated approach demands an intimate working relationship with the client group. This approach, which has synergies with the approach of JWA, acknowledges that clients bring a level of insider know-how and expertise to our projects that can never be matched by any consultant team.

The academic experience of Office dA has been the basis for developing a consultation process suited for institutional clients which organizes the design process around the inclusion of a variety of groups so as to promote and encourage participation.

Strategic Workshops
JWA believe that the greatest synergies are often discovered through broad discussion across the Consultant Team and the Client Group. A series of Strategic Workshops are undertaken, these workshops are an opportunity to pool collective knowledge for the benefit of the project. Workshops are not so much about determining the architectural solution, as about articulating the client's aspirations and directing research.



Jane Foss Russell Building - JWA

John Wardle Architects
John Wardle, M Arch
Principal
Adjunct Professor, Louis Laybourne-Smith School of Architecture and Design
John has an international reputation as a design architect and has developed a design process that builds upon ideas that evolve from a site's topography, landscape, history and context and a client's particular aspirations and values. John Wardle with Office dA will establish the project's overall creative design direction, lead the presentation of the project to key stakeholders, and promote discussion and interaction amongst the project's leadership group. John will assume ultimate responsibility for the successful delivery of architectural services for this project.

Stefan Mee, B Arch (Hons)
Principal
Stefan is a design leader within the practice. He will work closely with John Wardle and Office dA to establish the key design strategies and ideas for the project.

Meaghan Dwyer, B Arch (Hons)
Senior Associate
Meaghan is adept at articulating a clear spatial brief that responds to the constraints and opportunities that are inherent in the site.

JWA Registration with local boards + Authorities:
AIA no. 373
ARBV no. 50205



John Wardle Architects

office dA ARUP



The Nigel Peck Centre for Learning and Leadership - JWA



Jane Foss Russell Building - JWA



Banq - Office dA

MERIT

John Wardle Architects

Many projects by JWA have been highly awarded. This includes twice being recognised with the prestigious Sir Zelman Cowen Award for best public building in Australia in by the Royal Australian Institute of Architects. JWA has also won the Harold Desbrowe-Annear Award for best residential project on three occasions and has twice been the recipient of the Victorian Architecture Medal. JWA has also been published in many significant journals and books, both in Australia and internationally, including the Phaidon Atlas of 21st Century World Architecture, Domus, Architectural Review Australia, Architecture Australia and many others. The work of JWA has also been celebrated in a book Volume – John Wardle Architects published by Thames and Hudson, London in 2008.

Selected Awards JWA:

- Nigel Peck Centre for Learning and Leadership, Melbourne Grammar School
 - > National Award for Public Architecture. AIA 2008.
 - > The Emil Sodersten Award for Interior Architecture. AIA 2008.
 - > Victorian Architecture Medal 2008. AIA
 - > William Wardell Public Architecture Award, AIA 2008.
 - > Premier's Design Mark 2008, Premier's Design Awards. State of Design.

University of South Australia Kaurua Building

- > Sir Zelman Cowen Award for Public Buildings. RAIA 2006
- > Award - New Building. RAIA SA Chapter.
- > Award - Interior Architecture. RAIA SA Chapter

Queensland Brain Institute, The University of Queensland

- > National Commendation for Interior Architecture. AIA 2008.
- > Brisbane region Building of the Year. AIA 2008.

Urban Workshop, 50 Lonsdale Street

- > Sir Osborn McCutcheon Commercial Architecture Award. RAIA 2006.
- > Marion Mahony Interior Architecture Award. RAIA 2006.
- > Urban Design Award. RAIA 2006
- > Melbourne Prize. RAIA 2006.

RMIT Biosciences Building, Bundoora Campus

- > Sir Zelman Cowen Award for Public Buildings. RAIA 2002
- > Architecture Award: New institutional building. RAIA 2002.

Selected Publications JWA:

- 2009
 - > Gulmanelli, Stefano. 2009. 'QBI Brisbane', Domus No. 921, January, p. 34-39.
 - > Kaji-O'Grady, Sandra. 2009. 'Singularly Pluralist', Architecture Review Australia, 109, Apr/May, p.105 -111.
 - > Hatzellis, Steve. 2009. 'Architectural Visualisation', Architecture Review Australia, 109, Apr/May, p. 126-128.
- 2008
 - > Editors of Phaidon Press Phaidon Atlas of 21st Century World Architecture, Phaidon Press Ltd, London, 2008.
 - > Leon van Schaik, Paul Carter, Christopher McAuliffe, Andrew Hutson & Davina Jackson, 'Volume - John Wardle Architects, Thames & Hudson, Victoria, 2008.
 - > Smit, Jen. 2008. 'Civic Centre', Monument, Issue 84, April, pgs 59-63.
 - > Skinner, Peter. 2008. 'Queensland Brain Institute'. Architectural Review Australia, no. 105, p. 74-81.
- 2007
 - > Shelley Penn, ' Harbour Master', Monument, Issue 80, Melbourne, 2007
 - > 'The Urban Workshop, 50 Lonsdale Street', Architecture and Design Australia, Daab GmbH, 2007

Office dA

Office dA has received notable recognition for the firm's work. Amongst such honors are an Award in Architecture from the American Academy of Arts and Letters and recently, Tehrani and Ponce de Leon received the 2007 Target Fellowship in Architecture and Design from United States Artist, as well as the 2007 National Design Award in Architecture from the Cooper-Hewitt Museum. Office dA has been presented in numerous publications all over the world, including Architectural Record, Icon, Architect, I.D., Detail, Frame, Monitor, and the New York Times, among many others. All of their built projects have been awarded widely. Several notable awards include an AIA Housing Award for the Macallen Building, an AIA/LA Design Award for Helios House, and an AIA/ALA Library Building Award for the Rhode Island School of Design Library, among many others.

Selected Awards Office dA:

- Macallen Building
 - > 2009, ASLA Honor Award, General Design
 - > 2008, AIA/COTE Top Ten Green Project
 - > 2008, AIA Housing Award
 - > 2008, BSA/AIA New York Housing Design Award
 - > 2008, Residential Architect Housing Award, Grand Award
 - > 2008, ACEC Massachusetts Engineering Excellence Silver Award

Fleet Library, Rhode Island School of Design

- > 2008, BSA/AIA New York Educational Facility Design, Honor Award
- > 2008, BSA/IIDA/ASID Interior Architecture/Interior Design Award
- > 2008, ALA/IIDA Library Interior Design Awards, Outstanding Historic Renovation/Adaptive Reuse
- > 2007, AIA/ALA Library Building Award

Banq

- > 2009, Wallpaper Design Awards, Best Restaurant
- > 2008, BSA/IIDA/ASID Interior Architecture/Interior Design Award

11 Progressive Architecture Awards
 Thunder Stadium, 2009; Obzee Headquarters, 2008; Villa Moda, 2007; Intergenerational Learning Center, 2005; Witte Arts Building, 2003; Tongxian Art, 2002; CNA/Raytheon Master Plan, Wayland MA, 1999; Toledo House 1999; Casa La Roca, 1999; Zahedi House, 1998; Mill Road Residence, 1995

5 I.D. Magazine Awards
 Helios House, 2008; Fleet Library at the Rhode Island School of Design, 2007; Back Bay Collection, 2003; Northeastern University Multi-faith Spiritual Center, 2000; Office dA Furniture Collection, 2000

Selected Publications Office dA

- 2009
 - > Linda C. Lentz, "Recipes for Success," Architectural Record, January 2009, pp. 95, 104-106
 - > David Neustein, "Reconstructing Architecture," Architectural Review Australia, April/May 2009, pp. 68-70.
 - > Katie Gerfen, "P/A: The New Face of Progress," Architect, January 2009, pp. 56-83.
- 2008
 - > John Riordan, Boutique Restaurants, Collins Design, New York, NY, 2008, pp. 190-195.
 - > Editors of Phaidon Press, The Phaidon Atlas of 21st Century World Architecture, Phaidon Press Limited, London, 2008, p. 105, 637.
 - > "New Kuwait Sports Shooting Club," a+t, Autumn 2008, pp. 130-135.
 - > Michael Webb, "Slice It Up," Frame, November/December 2008, pp. 106-113.
- 2007
 - > Raymund Ryan, "Office dA in Boston, USA," The Plan, December 2007, pp. 29-40.
 - > Philippe Parreno, "Solar Petrol," Abitare, Issue 475, September, 2007, p.144-153.
 - > "Design Bordering on Art," Monitor, No. 46, 2007, pp. 64-67.



John Wardle Architects

office dA ARUP